



Yandi 36Mta Expansion

PROJECT LOCATION

Yandicoogina, Pilbara region, north Western Australia

PROJECT CLIENT

Rio Tinto

PROJECT SUMMARY

Rio Tinto Iron Ore engaged Calibre Projects as the prime EPCM consultant to increase the output of the Yandicoogina mine by 12 Mt/a to 36 Mt/a, from concept to completion including pre-feasibility, detailed design, procurement, construction and final commissioning.

The successful project included:

- primary and secondary sizing
- wet beneficiation plant
- thickening and in-pit waste disposal
- 7km of overland conveying
- tertiary crushing
- product screening and sampling
- two rail sidings
- mine communications
- utilities and infrastructure.

Calibre was instrumental in the testing of the process model, in which a pilot wet beneficiation plant was designed, developed and operated to test the metallurgical characteristics of the plant prior to full scale development.

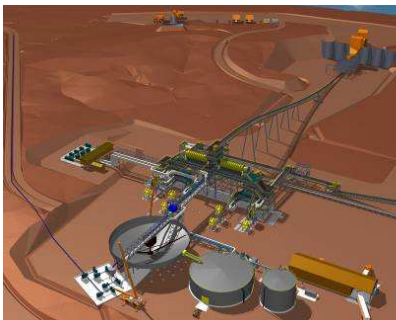
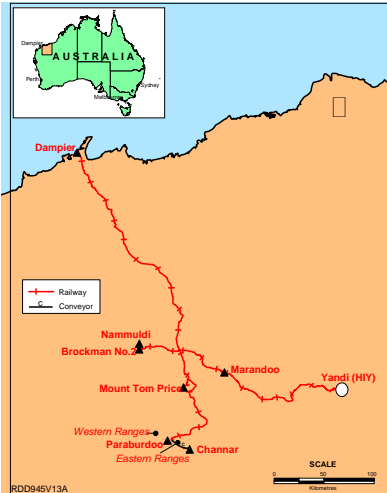
Given the current world demand for iron ore an aggressive schedule was required. Calibre proudly rose to the challenge and delivered the Project ahead of schedule and under budget. Calibre's relationship and management style with key suppliers and constructors was an integral part of this success.

The Project was delivered in June 2005 with an outstanding safety record (LTIFR < 0.5) with a peak construction workforce of over 400.

ABOUT CALIBRE PROJECTS

Calibre Projects is a results focused engineering consultancy providing engineering, procurement and construction management services to the resources industry.

For further information contact Calibre Projects on +61 8 9488 7200 or +61 7 3001 6000, or email info@calibreprojects.com.au



CALIBRE PROJECTS PTY LTD

ABN 57 108 438 393
www.calibreprojects.com.au

Perth +61 8 9488 7270
 Adelaide +61 8 8354 3153
 Brisbane +61 7 3001 6000

Head Office

Level 11, 140 St Georges Terrace
 Perth, Western Australia, 6000
 Australia